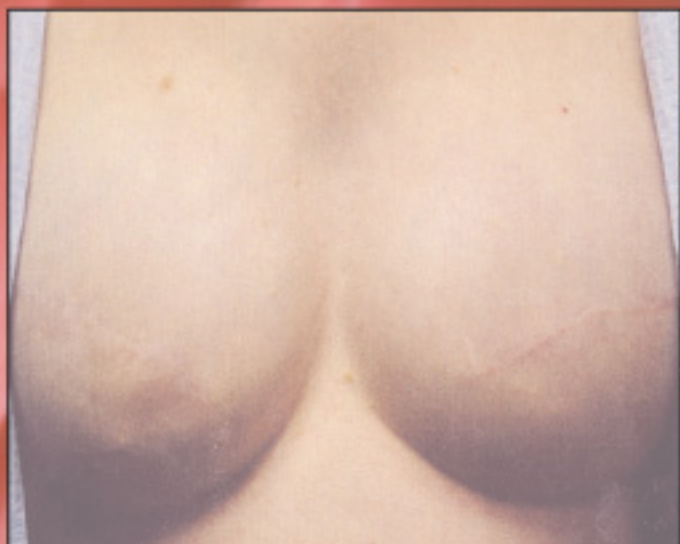


# CLASSIC *Beauty*

## BI-LATERAL BREAST



**Rachell Hall can  
recreate the aureole,  
often creating the illu-  
sion of a nipple where  
none exists at all.**



# CLASSIC *Beauty*

## UNI-LATERAL BREAST



Partial mastectomy repigmentation is an amazing process that creates an areola where none exists and matches it to the original. Even you won't be able to tell the difference.

Only one breast in this picture has been reconstructed.

Rachell Hall's artistry perfectly matches the reconstructed areola to the original.

